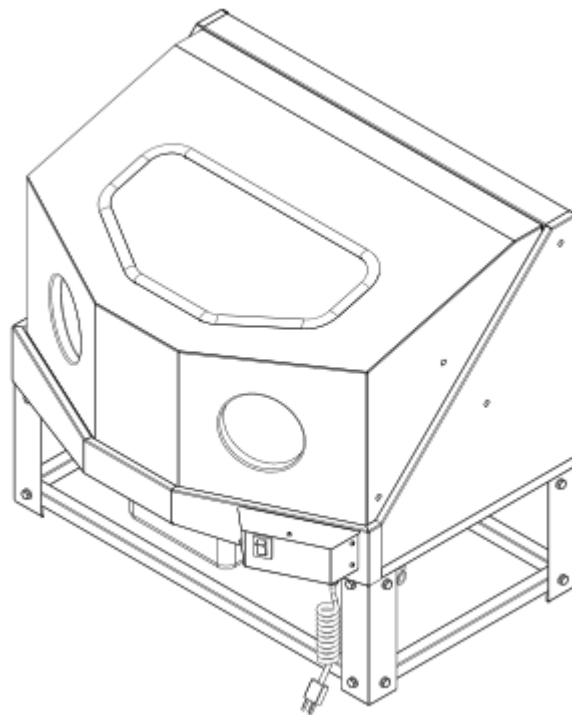


## Operating Instructions and Parts Manual

*Please read and save these instructions. Read through this owner's manual carefully before using product. Protect yourself and others by observing all safety information, warnings, and cautions. Failure to comply with instructions could result in personal injury and/or damage to product or property. Please retain instructions for future reference.*



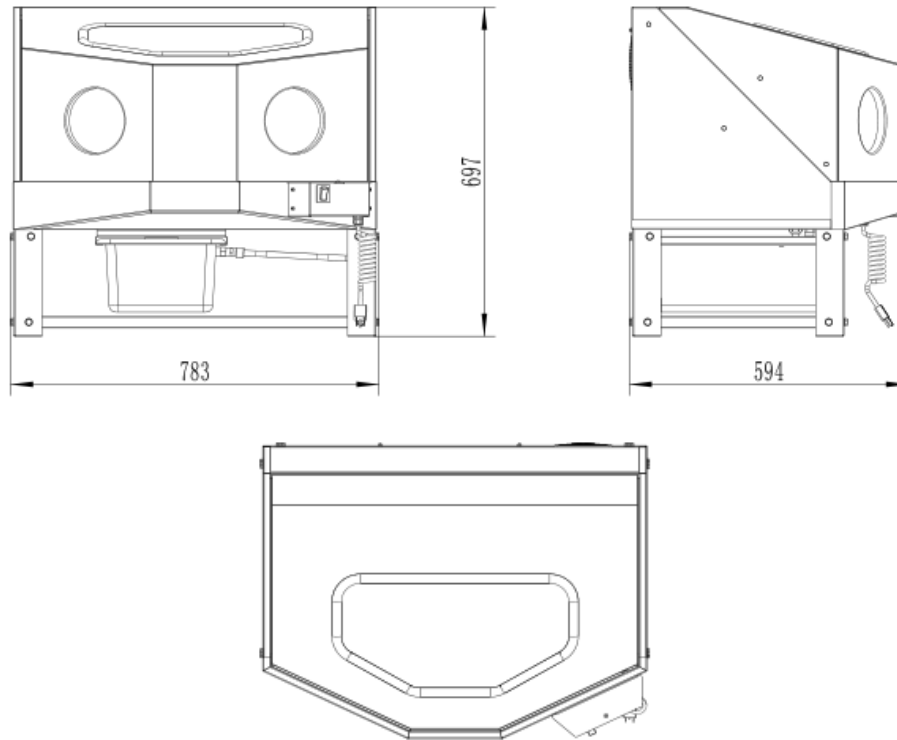
### **Kraftmeister Table Top Parts Washer Cabinet KR7665000**



#### **Description**

- ✧ Parts wash in large enclosed cabinet, with highly protection from solvent splash & odor.
- ✧ Pneumatic washing gun suitable for rapid cleaning.
- ✧ Flourescent lighting system for bright view.
- ✧ External air fan brings excellent ventilation.
- ✧ Washing pressure: 70-120 PSI
- ✧ Washing recirculate flux: 0.8 Liter/min.
- ✧ Working area: 29\*22\*17.8 inch.
- ✧ Solvent capacity: 4-9 L.
- ✧ Air requirement: 70-120 PSI@5CFM
- ✧ Size: 783\*594\*697mm

## ENCLOSED PARTS WASHER EPW 160



### General Safety Information

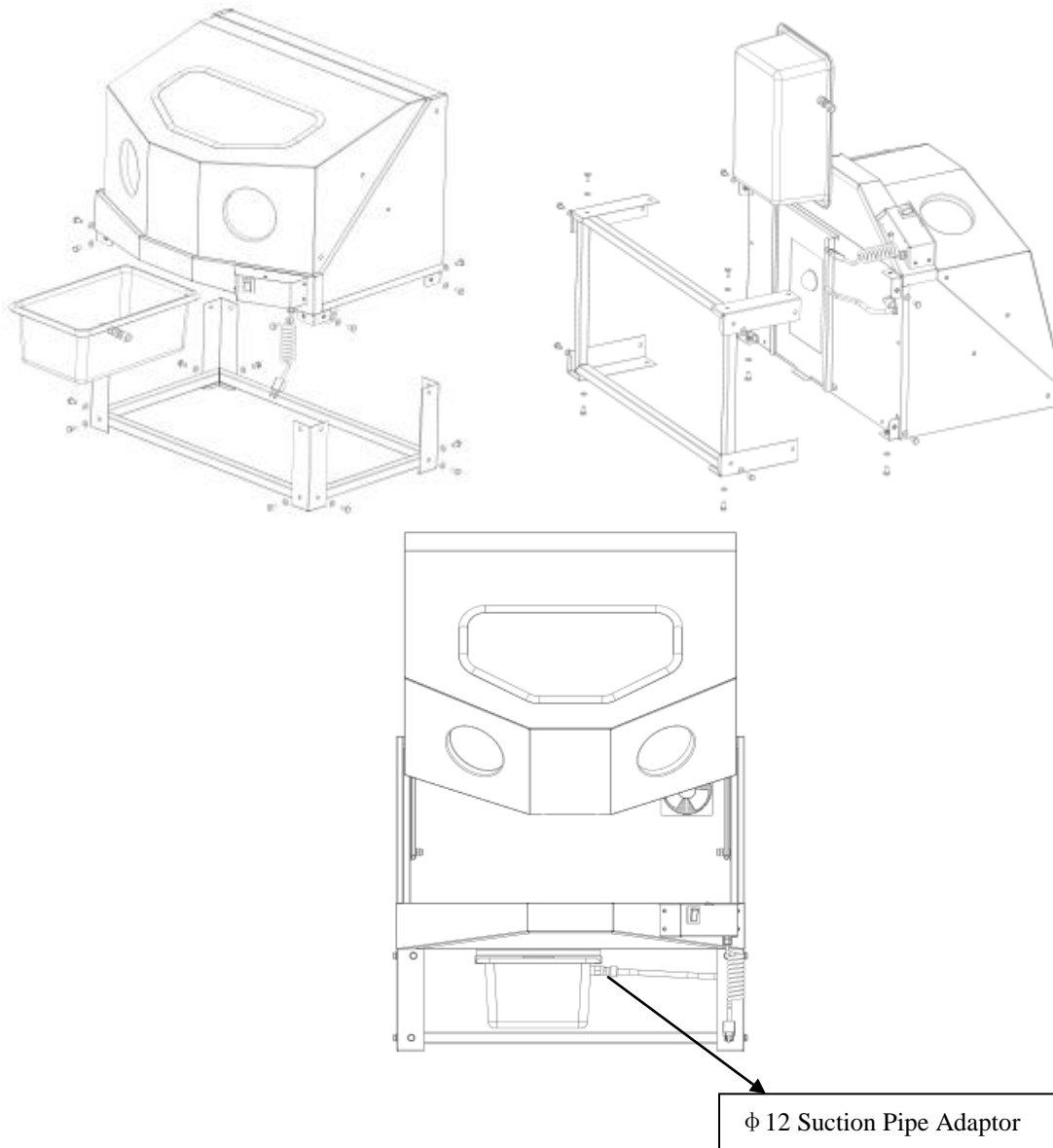
#### **⚠ WARNING**

1. **KEEP PARTS WASHER ON APPROPRIATE HEIGHT OF THE WORKBENCH.** Control the working bench horizontal deviation less than 2 degree angle.
2. **KEEP WORK AREA CLEAN.**  
*Cluttered areas and benches invite accidents.*
3. **KEEP CHILDREN AWAY.** All visitors should be kept safe distance from work area.
4. **USE RIGHT TOOL.** Don't force Parts Washer or attachment to do a job for which it was not designed.
5. **DO NOT USE ORGANIC CLEANING SOLVENT.** (EXCEPT customized parts washer).
6. **USE PROTECTIVE GLOVES.** Do not use broken gloves.
7. **DISCONNECT PARTS WASHER before servicing;**  
*When changing accessories.*

## ENCLOSED PARTS WASHER EPW 160

### Assembly

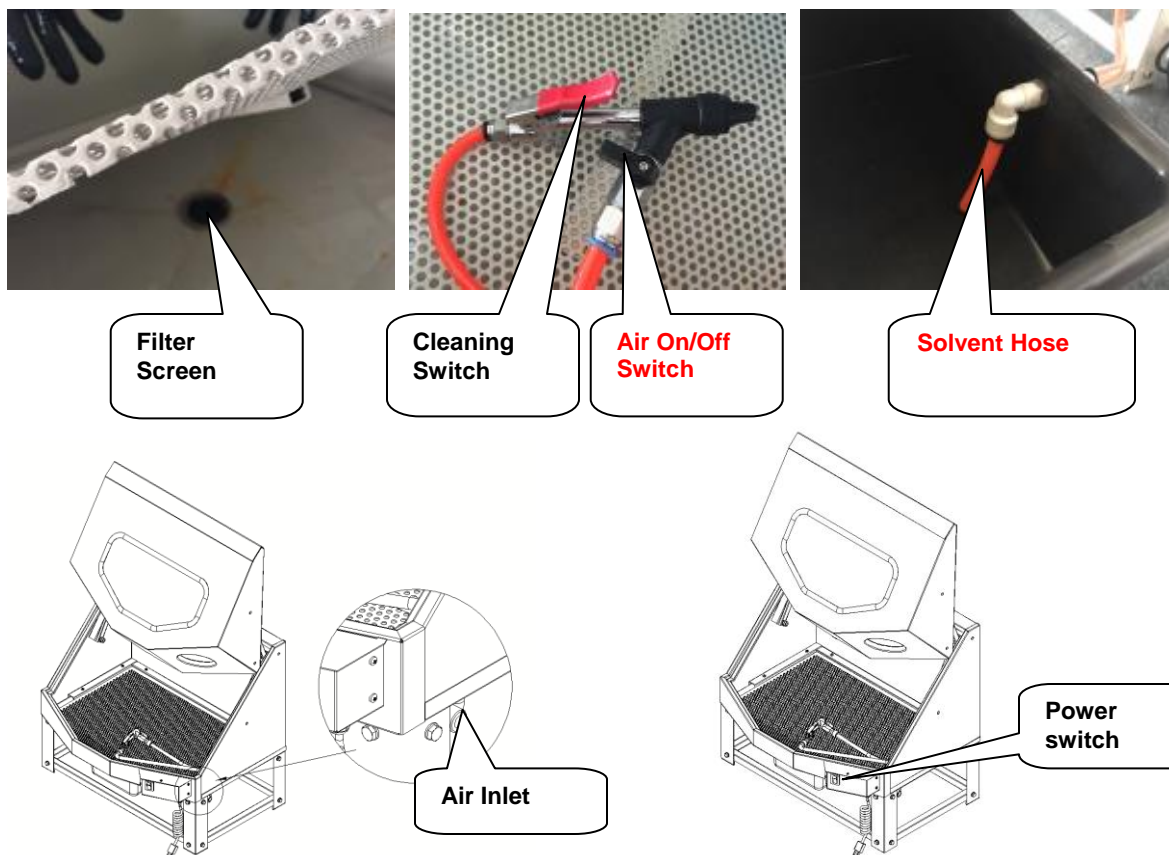
1. Open cabinet cover; get 4 support legs, 1 cleaning tank, and 1 **accessory bag** out.
2. Dump cabinet, connect 4 support legs with cabinet using 8 M8\*16 Screws and Flat Washers.
3. Assemble 4 Leg Reinforces with legs using 8 M8\*16 Screws and Flat Washers.
4. Load cleaning tank into sliding chute.
5. Connect  $\phi 12$  suction pipe with adaptor on side of the cleaning tank.



## ENCLOSED PARTS WASHER EPW 160

### Operation Notice

1. Before operation, add minimum 4L solvent into the tank. The maximum solvent capacity is 9liters.  
You could pull the tank out to look for the water level indicator. It should be 20mm higher than the suction mouth.
2. Connect the air compressor  $\phi 8$  hose with the quick fitting at the bottom of the cabinet.
3. Turn on the light when plug parts washer into an electric power supply and air compressor. Adjust appropriate air pressure based on the parts type you are washing.
4. Put parts into the machine and close the door, using cleaning gun to wash and change the black switch to dry with air.
5. Open the door to get parts out when finished and turn down the light.
6. Replace solvent when needed.



**Solvent Hose:** connect with cleaning gun and tank

**Air Inlet:** connect with air compressor

**Light Button**

**Cleaning Switch:** Press cleaning gun switch to clean parts with water/solvent.

**Air On/Off Switch:** Turn on the black switch for air drying.

**Filter Screen:** filtering residue from the solvent

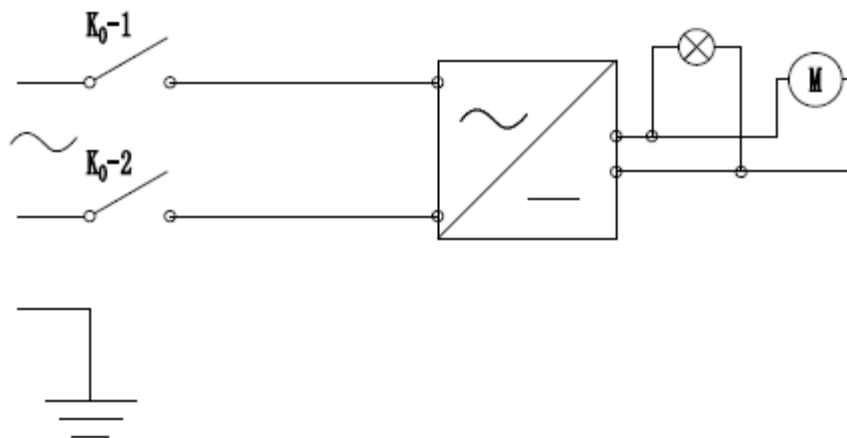
## ENCLOSED PARTS WASHER EPW 160

### Maintenance

**NOTE:** Disconnect power and air before the maintenance.

**Cleaning:** Please clean the Filter Screen then to assemble it back. Finally, put Web back on it.

### Wiring Diagram



---

## ENCLOSED PARTS WASHER EPW 160

---

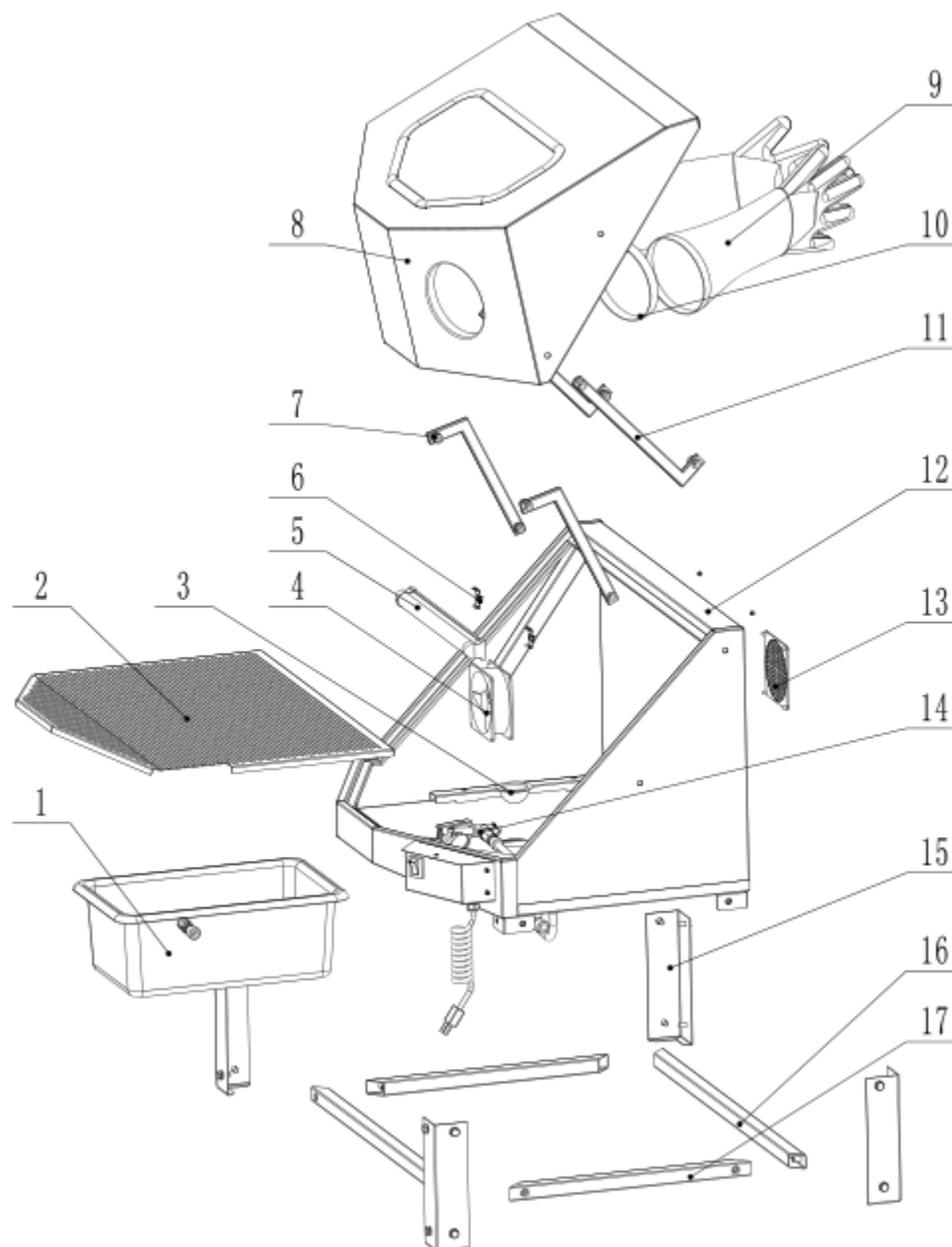
### Troubleshooting Chart

Symptom (s)	Possible Causes(s)	Corrective Action(s)
Cleaning gun only work with air, no solvent anymore.	1. Cleaning switch is OFF 2. Inadequate solvent 3. Absorption pipe is blocked	1. Turn it on 2. Add more solvent into the tank. 3. Check and clean the absorption pipe.
Light doesn't work but fan still works	1. light is broken	1. Replace a new one
Fan doesn't work but light still works	1. Fan is broken	2. Pull out waterproof plug and replace a new fan

---

## ENCLOSED PARTS WASHER EPW 160

### Explosive View



---

## ENCLOSED PARTS WASHER EPW 160

---

### Parts

Part No.	Description	Qty.
1	Tank	1
2	Web	1
3	Filter Screen	1
4	Demist Fan	1
5	LED Light	1
6	Hoop for light	2
7	Front Connecting Rod	2
8	Cabinet Cover	1
9	Gloves	1 pair
10	Gloves Hoop	2
11	Back Connecting Rod	2
12	Cabinet	1
13	Fan Cover	1
14	Cleaning Gun	1
15	Support Leg	4
16	Long Leg Reinforces	2
17	Short Leg Reinforces	2