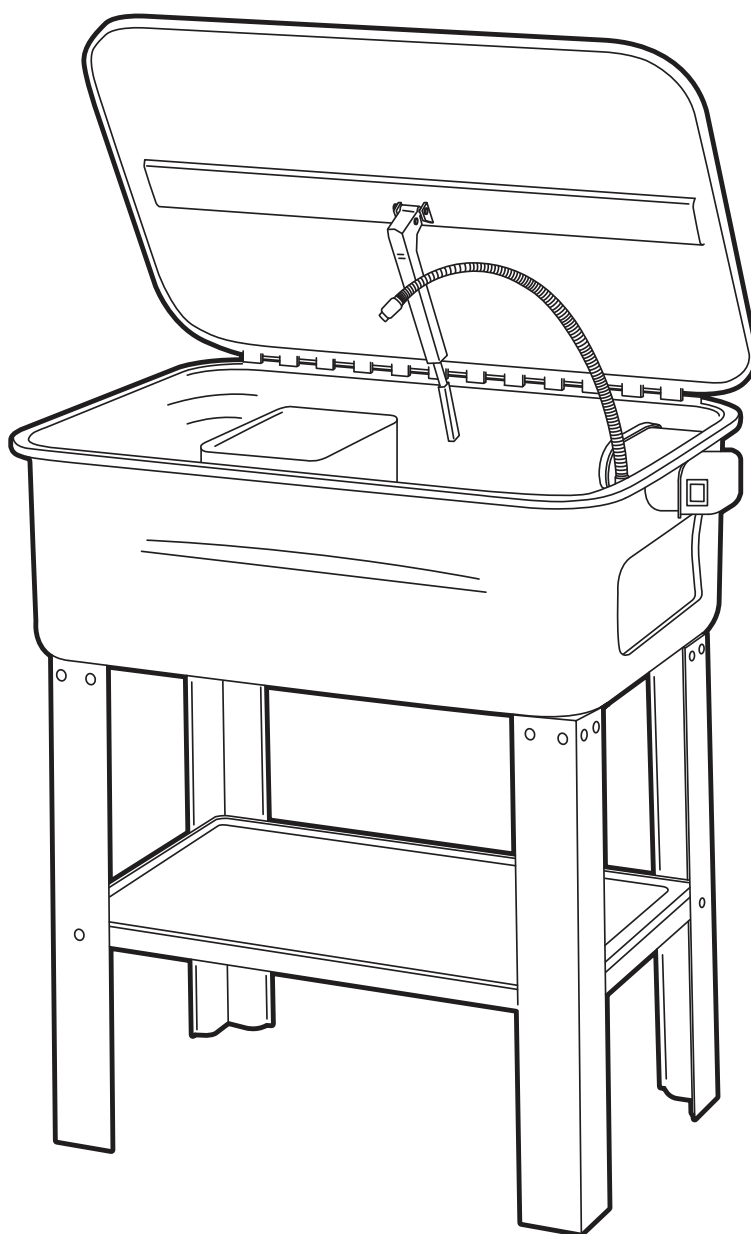


George Tools 75 Liter Parts Washer

OPERATING INSTRUCTIONS AND PARTS MANUAL

MODEL: GT9500008



Please read and save these instructions.

Read through this owner's manual carefully before using product. Protect yourself and others by observing all safety information, warnings, and cautions. Failure to comply with instructions could result in personal injury and/or damage to product or property. Please retain instructions for future reference.

TABLE OF CONTENTS

TABLE OF CONTENTS	2
SAFETY INFORMATION	2
SPECIFICATION	3
ELECTRICAL CONNECTIONS	4
ASSEMBLY	4-5
OPERATION	6
ENVIRONMENTAL PROTECTION	6
PARTS DIAGRAM	7

GUARANTEE

This product is guaranteed against faulty manufacture for a period of 12 months from the date of purchase. Please keep your receipt as proof of purchase. This guarantee is invalid if the product is found to have been abused or tampered with in any way, or not used for its intended purpose. Faulty goods should be returned to their place of purchase, no product can be returned to us without prior permission.
This guarantee does not effect your statutory rights.

SAFETY PRECAUTIONS



AS WITH ALL MACHINERY, THERE ARE CERTAIN HAZARDS INVOLVED WITH THEIR OPERATION AND USE. EXERCISING RESPECT AND CAUTION WILL CONSIDERABLY LESSEN THE RISK OF PERSONAL INJURY.
HOWEVER, IF NORMAL SAFETY PRECAUTIONS ARE OVERLOOKED OR IGNORED, PERSONAL INJURY TO THE OPERATOR OR DAMAGE TO PROPERTY, MAY RESULT.

1. ALWAYS Learn the machine’s applications, limitations, and the specific potential hazards peculiar to it. Read and become familiar with the entire operating manual.
2. ALWAYS wear suitable protective clothing, gloves and goggles.
3. ALWAYS clean off any accidental splashes of degreaser on the skin, seek medical attention immediately if necessary.
4. ALWAYS follow degreaser manufacturer’s instructions carefully.
5. ALWAYS check for damage. Before using the washer, any damaged part, should be checked to ensure that it will operate properly, and perform its intended function. Any damage should be properly repaired or the part replaced. If in doubt, DO NOT use the machine.
6. ALWAYS disconnect the washer from the power supply before carrying out any maintenance or cleaning of the parts washer.
7. ALWAYS keep work area clean. Cluttered areas and benches invite accidents, mop up accidental spillages of degreaser immediately.
ALWAYS ensure that adequate lighting is available. A minimum intensity of 300 lux should be provided. Ensure that lighting is placed so that you will not be working in your own shadow.

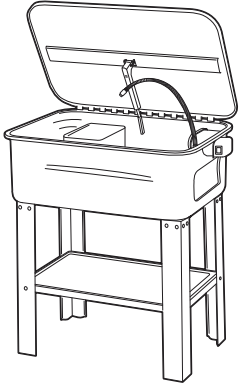
SAFETY PRECAUTIONS

8. ALWAYS keep children away. All visitors should be kept a safe distance from the work area, especially whilst operating the machine.
9. ALWAYS maintain machine in top condition. Keep washer clean for the best and safest performance. Follow maintenance instructions.
10. ALWAYS ensure the switch is off before plugging in to mains. Avoid accidental starting. ALWAYS concentrate on the job in hand, no matter how trivial it may seem. Be aware that
11. accidents are caused by carelessness due to familiarity.
12. ALWAYS keep your proper footing and balance at all times don't over reach. For best footing, wear rubber soled footwear. keep floor clear.

FEATURES

- **Extra large tank with component shelf, plus small parts tray.**
- **Accepts all common degreasing fluids.**
- **Fusible link automatically closes lid in case of fire.**
- **Built in replacement filter.**
- **Easy maintenance solvent pump.**

SPECIFICATIONS

Item Name	
Tank capacity: 20 Gallon	
Solvent capacity: 12 Gallon	
Max. pump output: 2.7-3.3 L/min	
Electrical Requirement: 120V, 60Hz / 240V, 50Hz	
	PW20G

ELECTRICAL CONNECTIONS

WARNING

WARNING! Read these electrical safety instructions thoroughly before connecting the product to the mains supply.

Before switching the product on, make sure that the voltage of your electricity supply is the same as that indicated on the rating plate. Connecting it to any other power source may cause damage.

This product may be fitted with a non-rewireable plug. If it is necessary to change the fuse in the plug, the fuse cover must be refitted. If the fuse cover becomes lost or damaged, the plug must not be used until a suitable replacement is obtained.

If the plug has to be changed because it is not suitable for your socket, or due to damage, it should be cut off and a replacement fitted, following the wiring instructions shown below. The old plug must be disposed of safely, as insertion into a mains socket could cause an electrical hazard.

ASSEMBLY

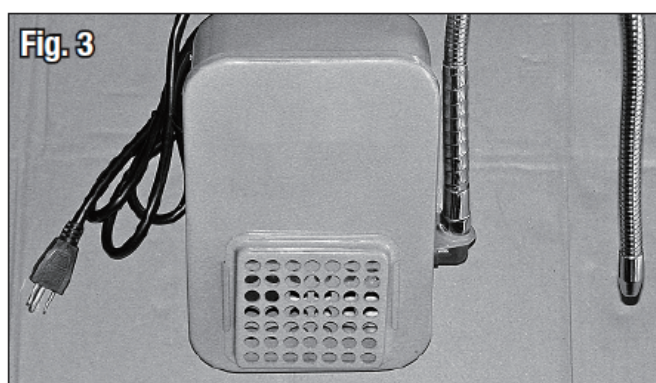
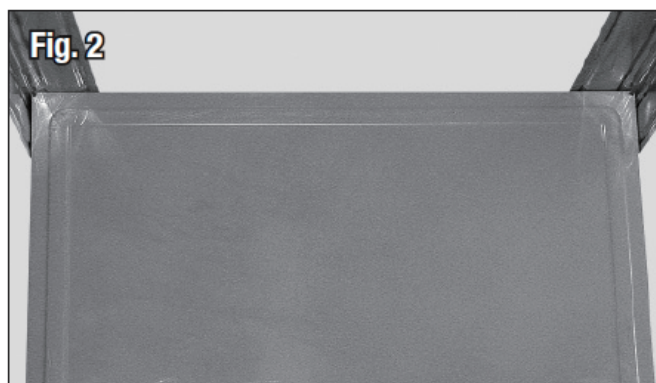
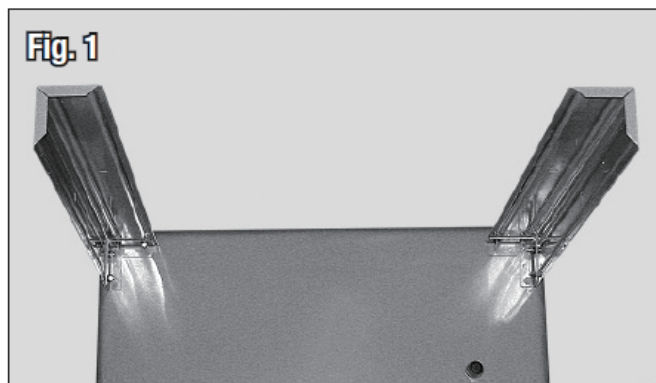
1. With spring loaded lid closed, place Tub unit upside down on a non-scratching surface (cardboard, carpet etc.).

2. Attach each of the 4 legs with 4 sets each of 6mm screws, lockwashers and nuts to the brackets on the Tub unit (Fig 1).

3. Attach Storage Tray to holes located mid-way of 4 legs with 2 sets each of 6mm screws, lockwashers and nuts (Fig 2).

4. Return the Tub unit to the upright position on its legs and open the springtensioned lid.

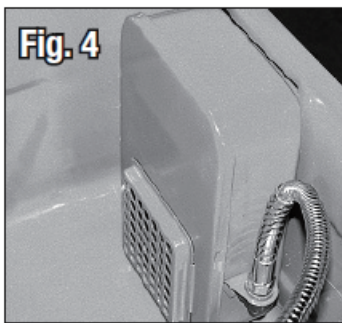
5. Thread the fitting of the Flexible Metal "Gooseneck" fluid outlet tube onto the Pump outlet (Fig 3). Place the Pump Box Lid over the open Pump Box with fluid intake perforations and raised ribs downward and over pump. Snap into place (Fig 3).



ASSEMBLY

6. Route the power cord of the Pump Box Assembly through the rectangular opening on the side of the Tub Unit with the Inlet Filter downward and facing inward.

The Power Switch is visible through the rectangular opening. Hook the raised offset tab on the rear of the Pump Box Assembly over the bottom edge of the rectangular opening (Figs 4-5).

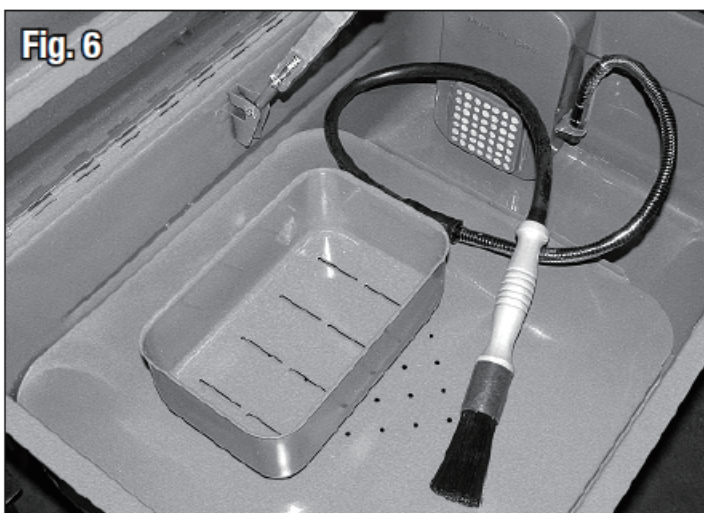


7. Check to see that the Tub drain plug is tightly installed.

8. Place the Parts Cleaning Tray over the edges on the walls of the tub (Fig 6).

9. Make sure the Nozzle of the Flexible Metal “Gooseneck” Fluid Outlet Tube is facing in toward the center of the Tub and downward.

10. The installation of the included Flow-through Parts Cleaning Brush and hose extension is optional. The molded fitting on the hose end opposite the brush may be slipped into place over the Fluid Outlet Tube Nozzle.



NOTE: Brush & Rubber Hose are OPTIONAL parts only.

11. Be sure the Nozzle or Brush outlet is facing in toward the center of the Tub and downward.

12. Fill unit with suitable, water-based degreasing solution sufficiently to cover the entire Inlet Filter (approx. 12 gallons). Important Note: Follow degreasing solution mixing, usage and safety label instructions carefully before using.

13. Plug power cord into an approved, grounded and GFI equipped Outlet.

14. Turn Power Switch to the “On” position. The Parts Washer is now ready for use.

OPERATION

1. Fill only with a non-flammable degreaser or cleaning agent, to just below the level of the parts shelf. DO NOT fill with flammable solvents such as paraffin, thinners, etc.
2. Open the lid, switch the pump on and hold the part to be cleaned under the nozzle, slowly rotate the component until clean.
3. When clean, leave to drain on the tray or in a small component container until dry.
4. Switch off the pump and close the lid and disconnect the power supply.
5. Remove gloves and goggles, store safely.



Note: Any spillages should be mopped up immediately, so as not to cause a safety hazard.
IMPORTANT:

1. The Lid Stay incorporates a safety device in the form of a fusible link, which closes the lid in the event of fire. The link is non-resetting and must be replaced should it be activated.
2. Clean the pump filter regularly, by sliding it away from the pump housing and rinsing it in clean degreaser.
3. Do not allow the level of liquid in the parts washer to fall below the pump inlet, as damage to the pump can result.

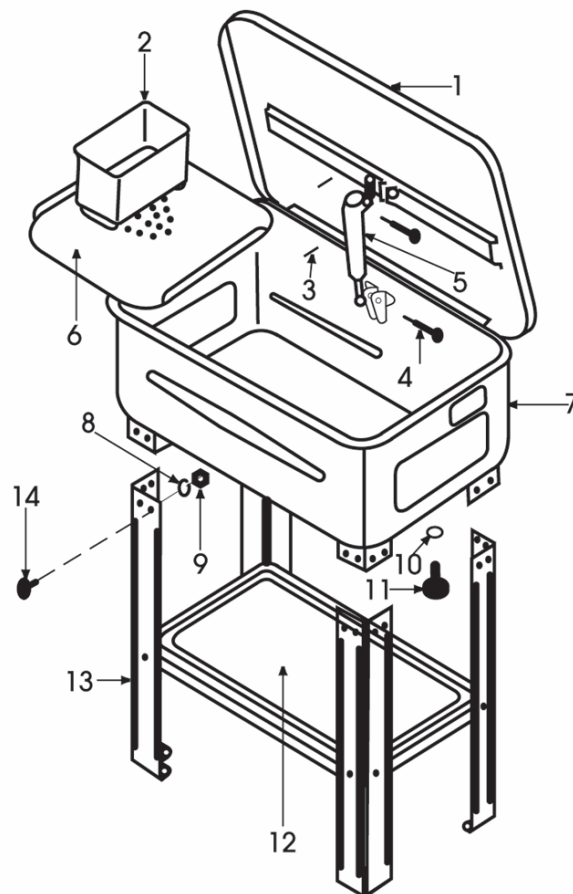
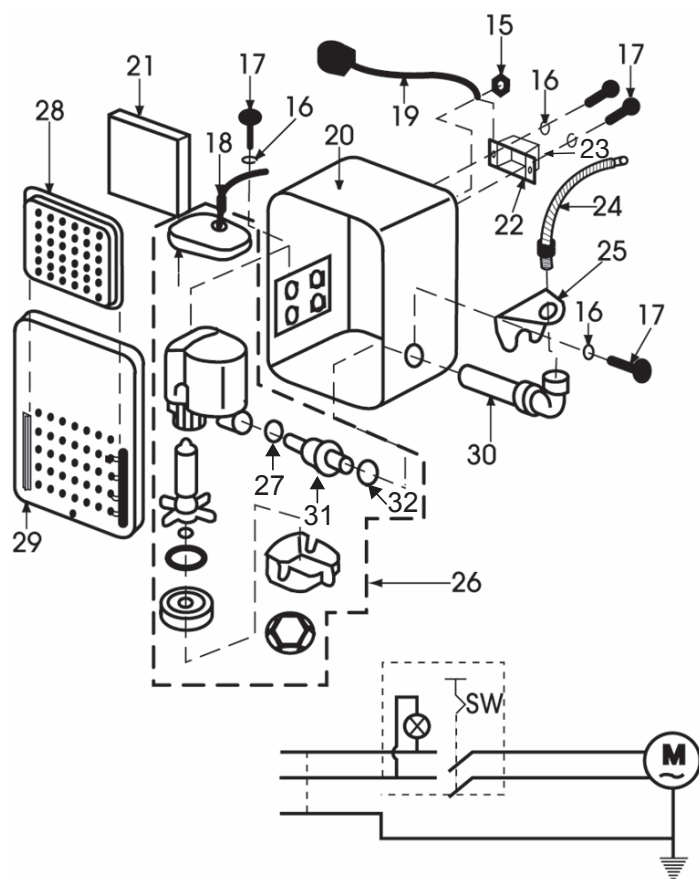
ENVIRONMENTAL PROTECTION

Do not dispose of this product or damaged components with general household waste. All tools, accessories and packaging should be sorted, taken to a recycling centre and disposed of appropriately.

One of the most damaging sources of environmental pollution is oil products. Never throw away used oil with domestic refuse or flush it down a sink or drain. Collect any oil in a leak proof container and take it to your local waste disposal site.

 Through purchase of this product, the customer is taking on the obligation to the treatment, recycling & recovery and environmentally sound disposal. In effect, this means that this product  must not be disposed of with general household waste. It must be disposed at a recognised disposal facility.

PARTS DIAGRAM



PARTS LIST

N.O.	DESCRIPTION	N.O.	DESCRIPTION	N.O.	DESCRIPTION
1	Lid	16	Spring Washer	31	Spilgot
2	Small Parts Container	17	Screw	32	Plastic washer
3	Spring Pin	18	Grommet		
4	Pin	19	Power Cable & Plug		
5	Lid Stay c/w Fusible Link	20	Pump Housing		
6	Parts Cleaning Tray	21	Filter		
7	Tub	22	Switch Box		
8	Spring Washer	23	On/Off Switch		
9	Nut	24	Flexible Metal Tube		
10	'O'-Ring	25	Elbow Seat		
11	Plug	26	Pump Assy complete		
12	Storage Tray	27	Shin Washer		
13	Leg	28	Filter Cover		
14	Pan Head Screw	29	Pump Housing Cover		
15	Nut	30	Elbow		